



CAT 6A Inline Coupler

Part no.: NP0025

Technical Features

Cat. 6A Class EA 10G 500MHz

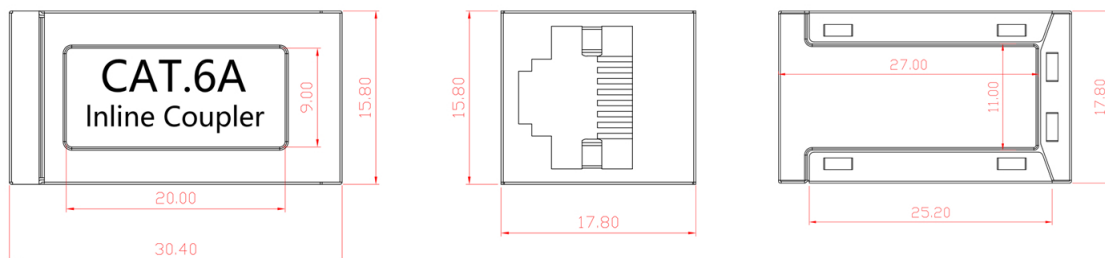
2 x RJ45 Jack, 1:1

RJ45 Patch Cable Coupler

Gold Plated Contacts

Metal Housing

Technical Drawings



NP0025



4 052792 041439

Made in China

www.logilink.com



RoHS
compliant



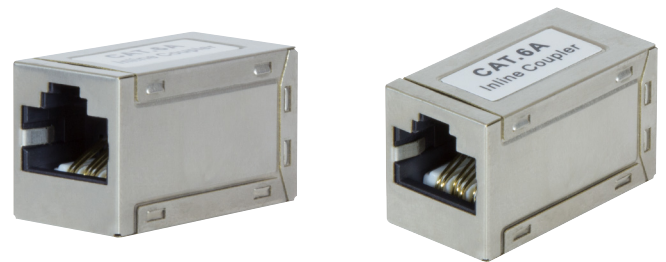
* The specifications and pictures are subject to change without notice.
*All trade names referenced are the registered trademark of their respective owners.

Package Contents

CAT 6A Inline Coupler x 1

Packaging Informations

| | |
|-------------------|-------------------|
| Packing Dimension | 150 x 100 x 20mm |
| Packing Weight | 0,011kg |
| Carton Dimension | 440 x 340 x 230mm |
| Carton Q'ty | 1000pcs |
| Carton Weight | 11,4kg |



NP0025



4 052792 041439

Made in China

www.logilink.com



RoHS
compliant



* The specifications and pictures are subject to change without notice.
*All trade names referenced are the registered namework of their respective owners.